

# Area Drains

## Catch Basin Type 50

### Item Detail

- Not a traffic bearing area drain

### Concrete Lid

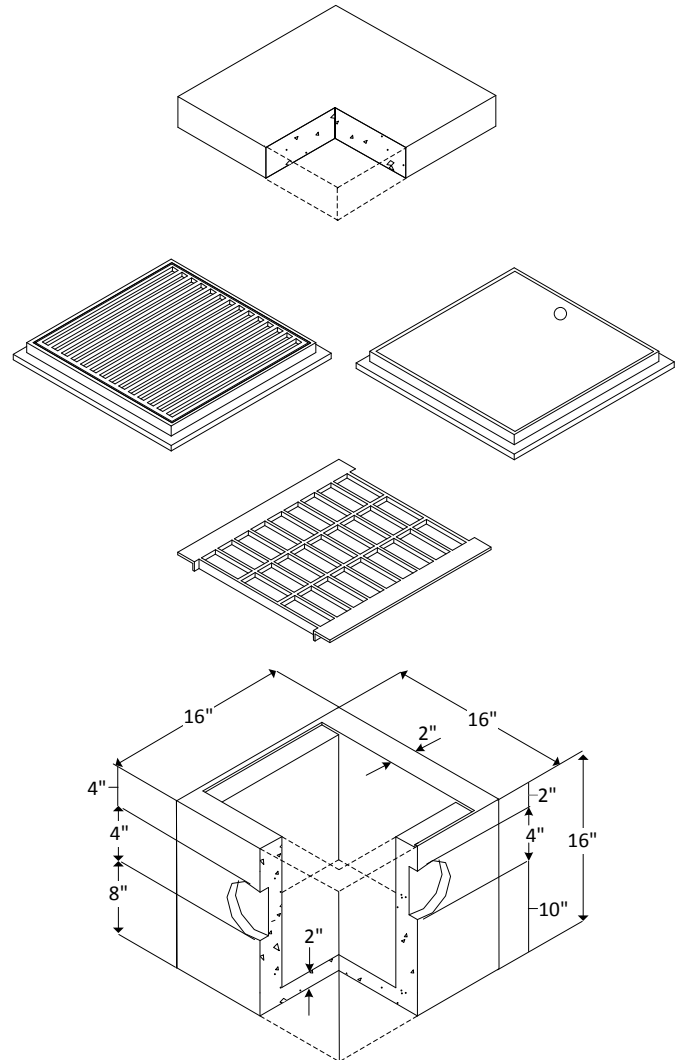
- A concrete lid can be used to convert the basin into a junction box

### Cast Iron Grate

- The 12" x 12" cast iron grate drops in the recessed area at the top of the basin
- We also offer a 12" x 12" frame & grate

### Additional Information

- Not reinforced
- Base unit has five inch (5") poly cut-outs for pipe on each of the four sides



Note: drawings not to scale