



Manhole Products

48" Type 240 A,B,C,D Precast Catch Basin
City of Seattle Standard Plan

Grade Adjustment Rings Available

- 2", 3", 4", 6"

Hole or Knock Out Dimensions

- Maximum hole size is 36 inches
- 8 inches of minimum distance between holes
- 2 inch diameter lifting holes provided
- Center hole flat tops available
- Cored, cast-in and custom block-out/knock-outs available

Conformity Standards

- ASTM C478 Manhole
- ASTM C443 rubber gasket joint
- ASTM D4101 & 232A/B polypropylene steps and ladders
- Washington State APWA / WSDOT Standard

Options Available

- Pre-channeled base
- Specialized coatings
- Kor-N-Seal boots
- 1' thru 10' Polypropylene ladders
- Cored holes
- 2 foot 8 inches min sump
- Custom hatches

Section Specifications

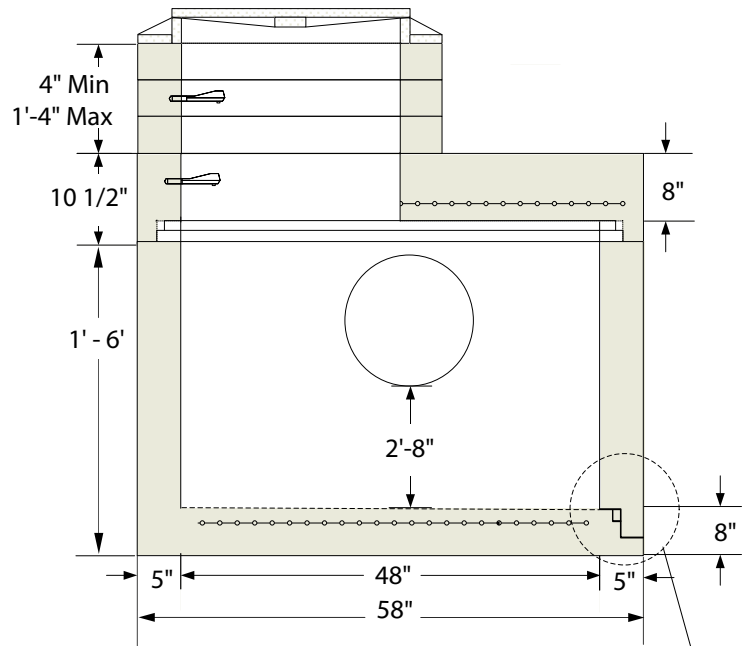
Height	Section	Base
6"	410 LBS	-
12"	859 LBS	1,859 LBS
24"	1,735 LBS	2,735 LBS
36"	2,612 LBS	3,612 LBS
48"	3,489 LBS	4,489 LBS
60"	4,365 LBS	5,365 LBS
72"	5,069 LBS	6,069 LBS

Base Slab

1,698 LBS

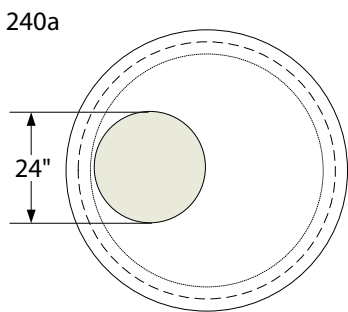
Flat Top

1,667 LBS

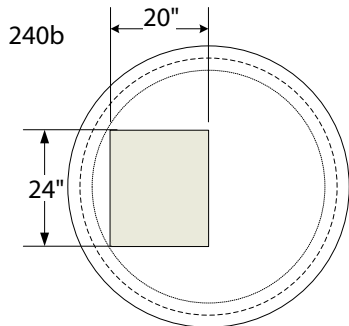


Top Slab Plan Views

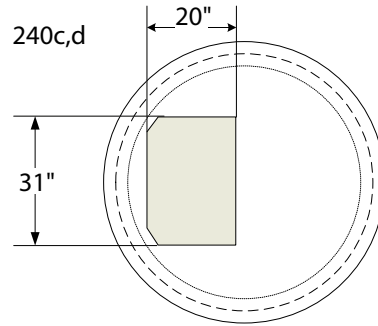
Gasket Shown Uncompressed



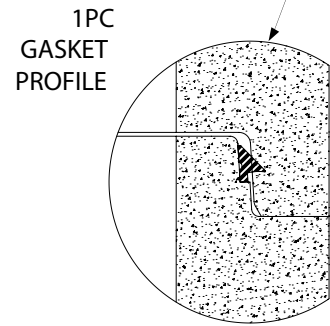
Unit R



Unit P-48



Unit T



Note: Drawings are not to scale.



Shope Concrete, LLC
1618 East Main Avenue
Puyallup, WA 98372-3142

(253) 848-1551
Fax Line 1 (253) 845-0292
Fax Line 2 (253) 864-6172

1-800-422-7560 [TOLL FREE]
www.shopeconcrete.com