

Catch Basins

Catch Basin Type 1P
WSDOT B-5.20-00

Riser Sections

- Available in 2", 4", 6" & 12"

Reinforcing

- Reinforcing meets ASTM Standard Specifications
- All components
- #3 grade 60 reinforcing

6 Inch Riser

- 300 lbs

12 Inch Riser

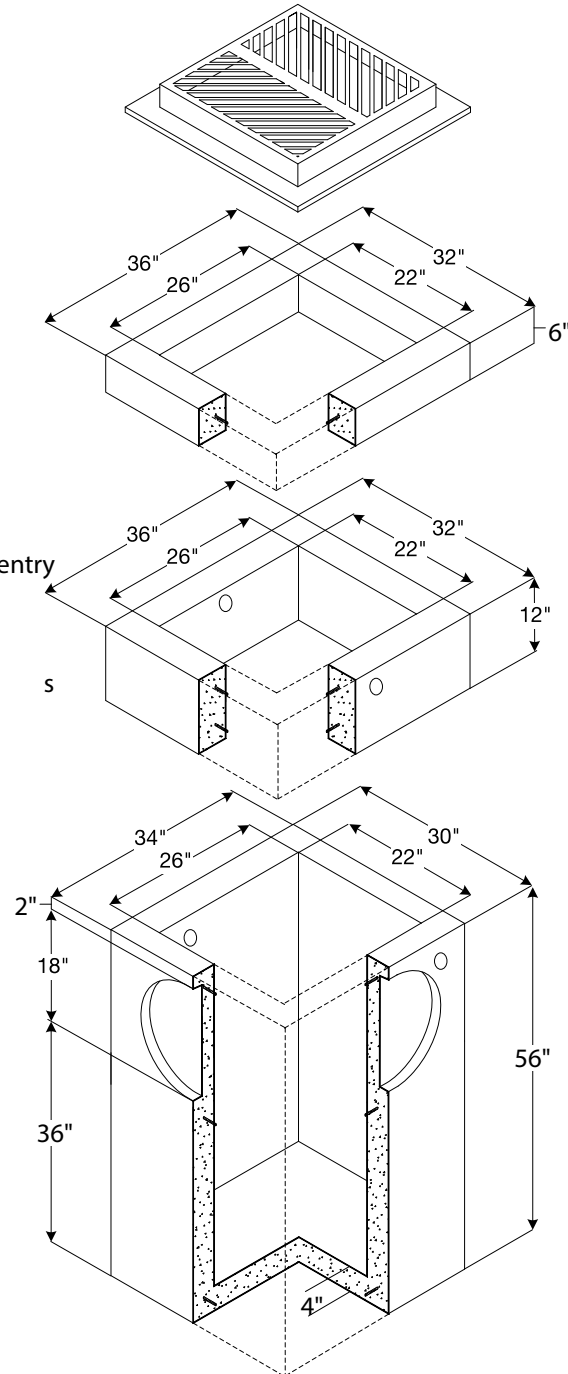
- 600 lbs

Precast Base

- Base unit has four-way knock outs provided for pipe entry
- 2500 lbs

Conformity Standards

- Washington State APWA / WSDOT Standard Specifications
- WSDOT B-1b



Note: Drawings are not to scale.