



Area Drains

Catch Basin Type 9

Reinforcing

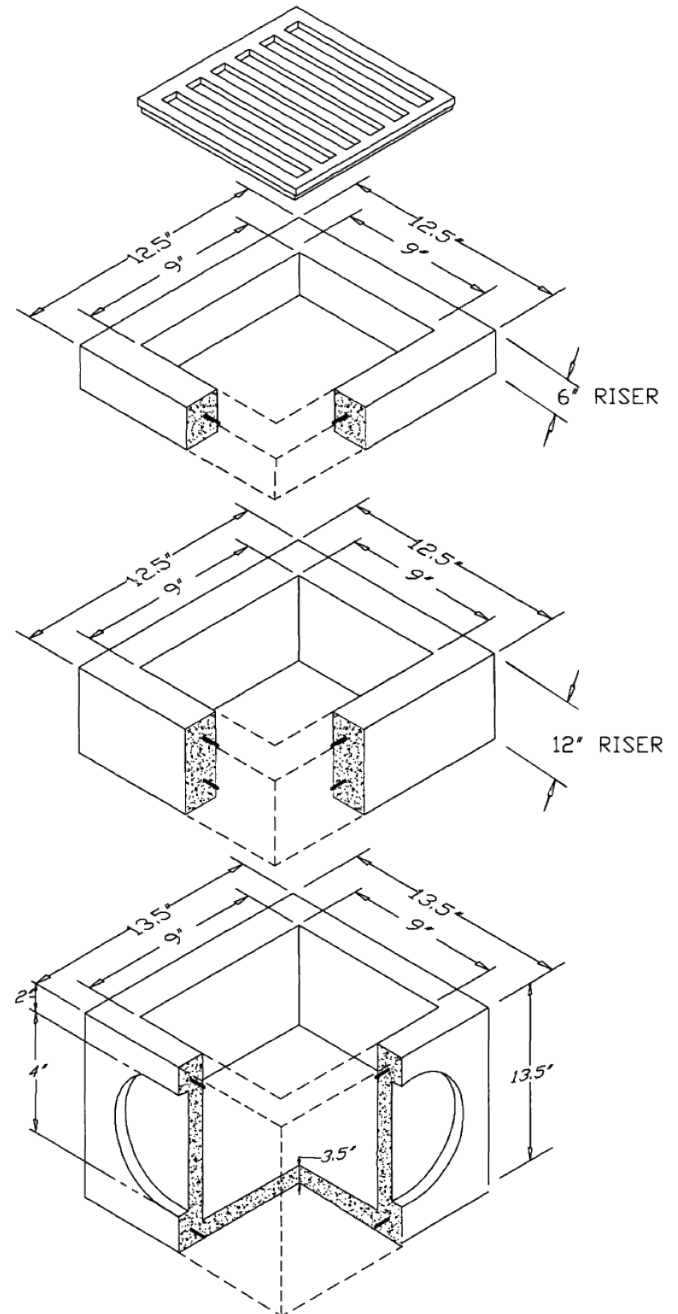
- Non traffic rated

Cast Iron Grate

- An 9" x 9" grate is available

Additional Information

- The base unit has a 12" diameter knock-out on each of the four sides
- Base unit - 1000 lbs
- 6 inch Riser - 150 lbs
- 12 inch Riser - 300 lbs
- 12 inch Riser with plastic knockouts - 300 lbs
- 1½ inch hole on each side for handling



Note: Drawings not to scale

www.shopeconcrete.com

1-800-422-7560 [TOLL FREE]



Shope Concrete, LLC
1618 East Main Avenue
Puyallup, WA 98372-3142

(253) 848-1551
Fax Line 1 (253) 845-0292
Fax Line 2 (253) 864-6172

